



Phonological Awareness Literacy Screening

Pre-K

Kindergarten

Grades 1–3

## Go Fish

Phonological Awareness / Rhyme



### Materials

1. Rhyming cards



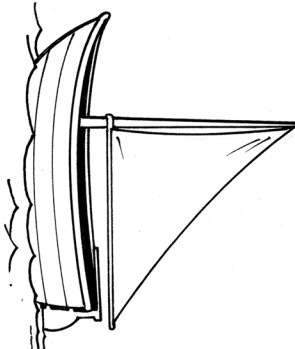
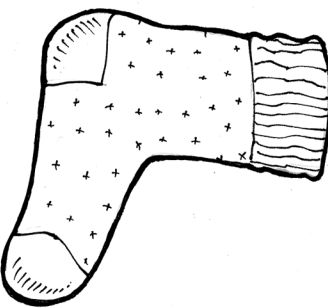
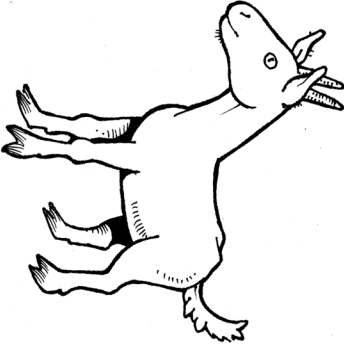
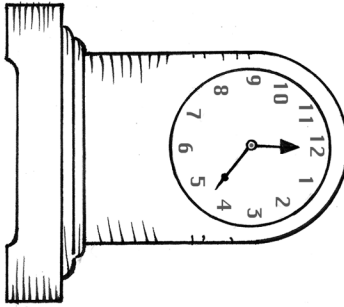
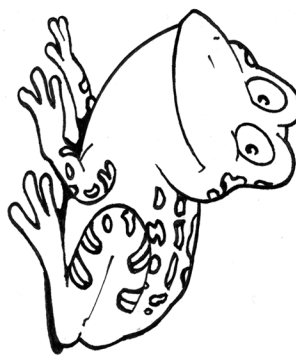
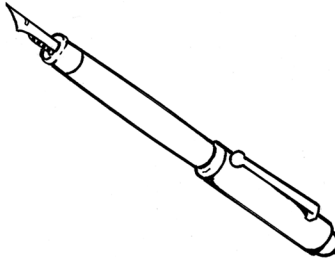
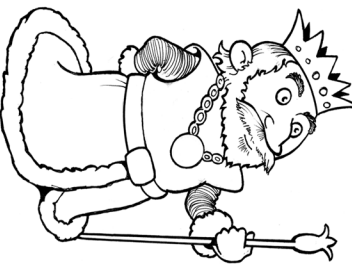
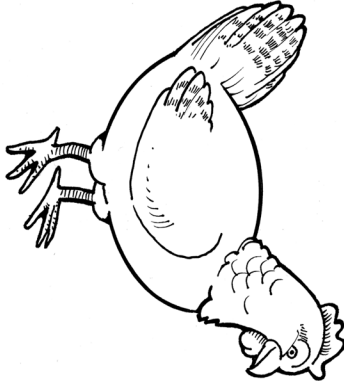
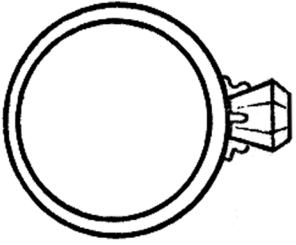
### Virginia SOLs

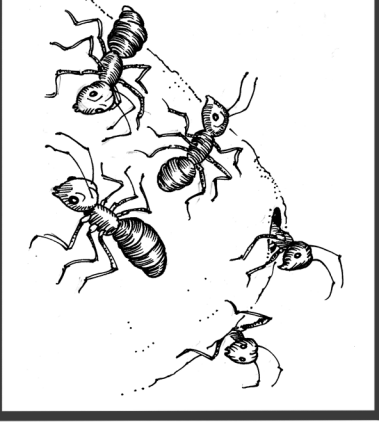
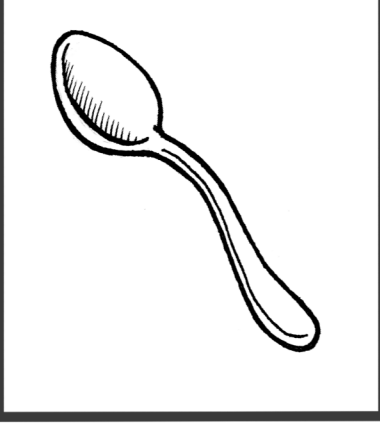
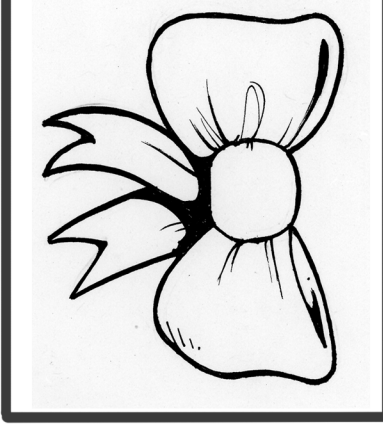
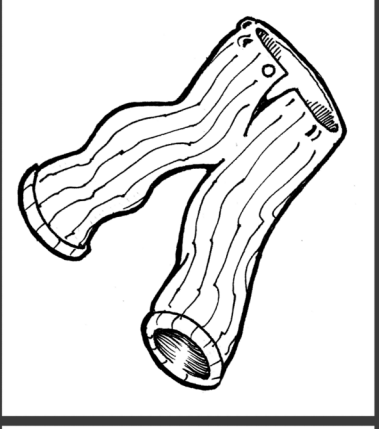
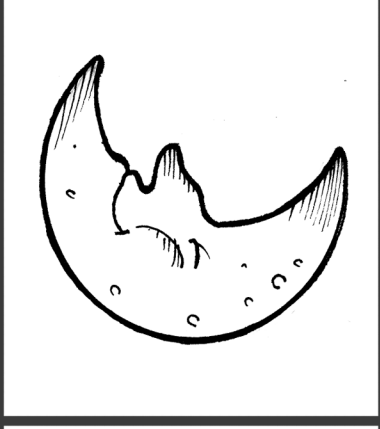
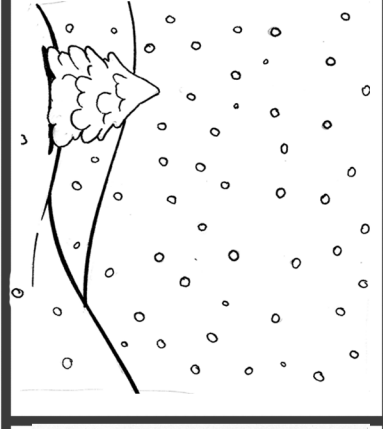
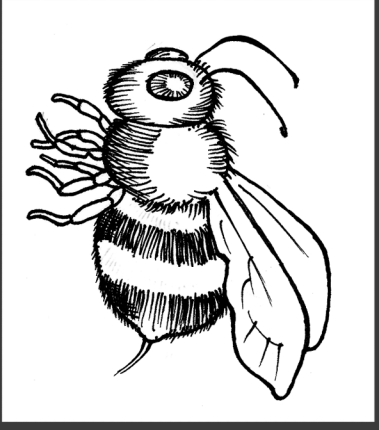
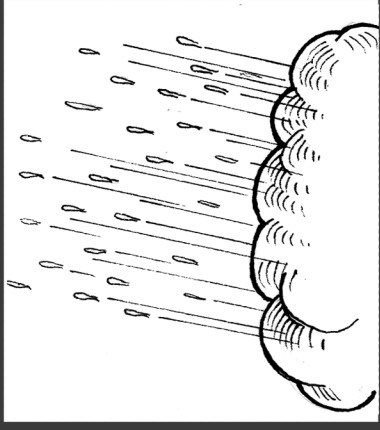
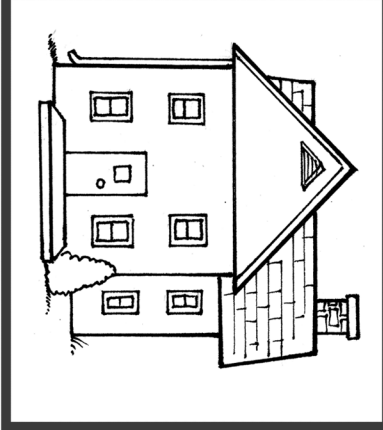
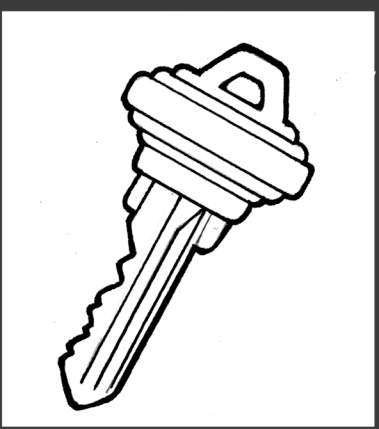
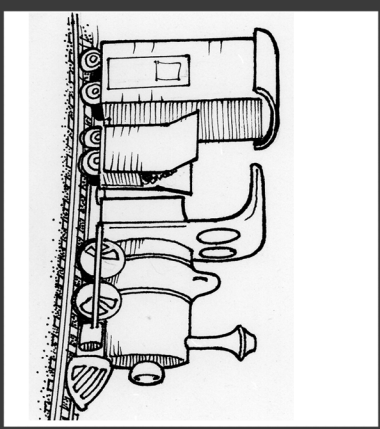
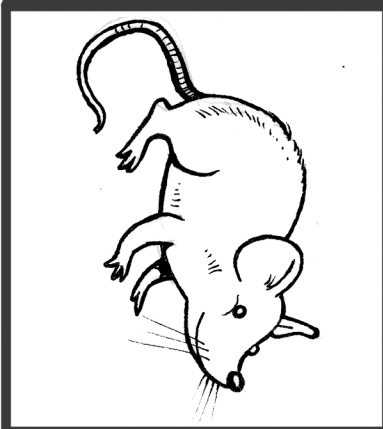
K.7, 1.4

### Procedure

1. Make a deck of rhyming cards.
2. Shuffle and deal each player 5 cards. Put the rest of the cards face down in a pile.
3. The first child says, “I have pig.” The child with the matching rhyme says, “I have wig.” They put the cards in a pile in the center. If there is no match, the child will fish a card out of the pile until a match is made.
4. The child to run out of cards first is the winner.

Rhyme Cards





Rhyme Cards